

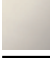
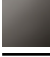






36 607 980



- Rosette 60 x 60 mm
- Oberteil mit ablängbarer Spindel und Hülse

	Chrom	36 607 980-00
	Platin gebürstet	36 607 980-06
	Platin	36 607 980-08
	Dark Chrome	36 607 980-19
	Messing gebürstet (23kt Gold)	36 607 980-28
	Schwarz matt	36 607 980-33
	Chrom gebürstet	36 607 980-93
	Dark Platinum gebürstet	36 607 980-99

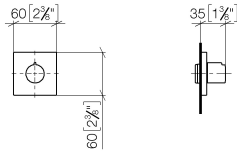
Benötigtes Zubehör



- UP-Ventil 1/2" -** 35 607 970 90
- Max. Einbautiefe 145 mm
 - Min. Einbautiefe 75 mm

36 607 980

mm [inches]



Zertifikate

DVGW_DW-
6501DN0116.

WRAS_2011026.

IAPMO_4976 (1).

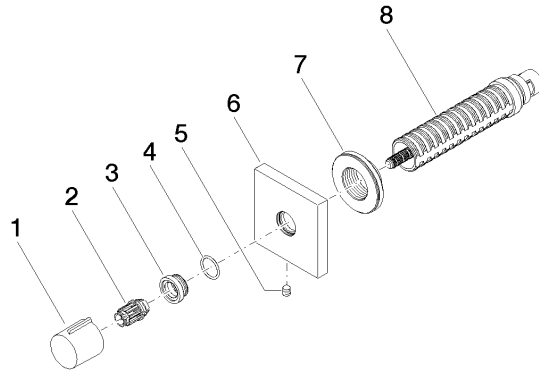
LGA_29931.

WRAS_2010066.

DVGW_DW-
6512DN0706.

LGA_29932.

36 607 980



Ersatzteilstückliste

Nr.	Artikelnummer	Benennung	Verbaumenge	Lieferzeit
1	09 20 98 001-00	Griff	1	10
2	09 12 12 005 90	Rastbuchse	1	2
3	09 12 12 043-00	Aufnahme	1	10
4	09 14 10 017 90	Dichtung	1	2
5	90 31 11 004 00 90	Stift	1	2
6	09 27 98 014-00	Rosette	1	10
7	09 21 02 151 90	Hülse	1	2
8	90 90 03 202 00 90	Oberteil	1	2